

# THE CARMO RUINS AND ARCHAEOLOGICAL MUSEUM

EN

**MAC**  
MUSEU  
ARQUEOLÓGICO  
DO CARMO

## THE BUILDING

MAC, the Museu Arqueológico do Carmo (Carmo Archaeological Museum) is housed in the ruins of the old Church of the Convent of Santa Maria do Carmo, founded in 1389 by Nuno Álvares Pereira.

Carmo was one of Lisbon's most beautiful Gothic churches until the 1755 earthquake caused serious damage to the building and destroyed almost all of its religious-artistic possessions.

Reconstruction work started in 1756 but was definitively suspended in 1834, leaving the naves and transept without cover and the chapels incomplete, when the religious orders in Portugal were abolished.

Some of the building's original 14<sup>th</sup> - 15<sup>th</sup> century features have been preserved, including the West and South portals and the chevet area.



## Opening times

Monday to Saturday  
10 am to 6 pm (November to April)  
10 am to 7 pm (May to October)

## Closed

Sundays, 1<sup>st</sup> January, 1<sup>st</sup> May and 25<sup>th</sup> December

## Library/Archive

Advanced booking is required for consultation.

## Public transport

By Lift: Elevador de Santa Justa  
By Tram: N<sup>o</sup> 28 (Chiado)  
By Bus: N<sup>o</sup> 758  
By Train: Rossio Station  
By Underground: Baixa – Chiado Station

## Contacts and Services


Associação dos Arqueólogos Portugueses  
(Association of Portuguese Archaeologists)  
Museu Arqueológico do Carmo  
Largo do Carmo, 1200-092 Lisbon  
T. 21 347 86 29 | 21 346 04 73


Board: [direccao@arqueologos.pt](mailto:direccao@arqueologos.pt)  
Curator: [macconservadora@arqueologos.pt](mailto:macconservadora@arqueologos.pt)  
Admin. Office: [secretaria@arqueologos.pt](mailto:secretaria@arqueologos.pt)

## Education Department

Guided tours and workshops.  
Advanced booking is required for all activities.  
T. 21 347 86 29  
[servicoeducativo@arqueologos.pt](mailto:servicoeducativo@arqueologos.pt)

[www.museuarqueologicodocarmo.pt](http://www.museuarqueologicodocarmo.pt)

 [facebook.com/museuarqueologicodocarmo](https://facebook.com/museuarqueologicodocarmo)

 [instagram.com/museuarqueologicodocarmo](https://instagram.com/museuarqueologicodocarmo)

**MAC**  
MUSEU  
ARQUEOLÓGICO  
DO CARMO

**AAP**  
ASSOCIAÇÃO  
DOS ARQUEÓLOGOS  
PORTUGUESES

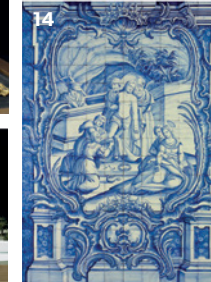
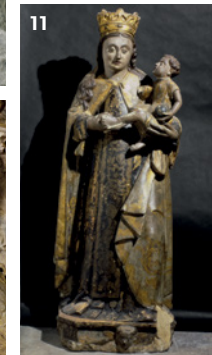
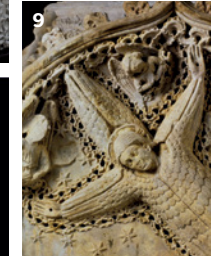
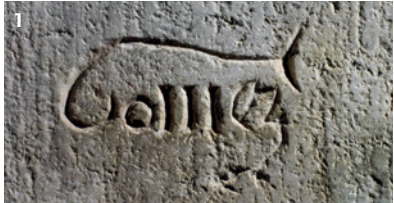
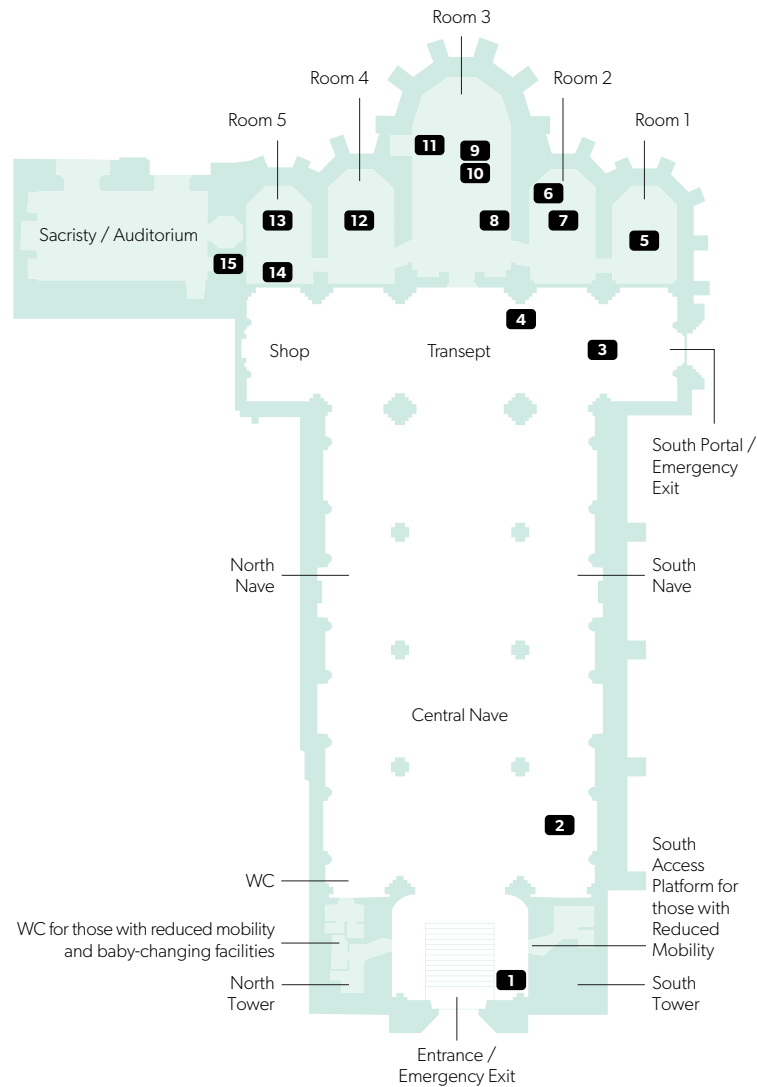


## THE MUSEUM

Founded in 1863, by the royal architect Joaquim Possidónio da Silva, the Associação dos Arquitectos Cívicos Portugueses (Association of Portuguese Civil Architects) would later become today's Associação dos Arqueólogos Portugueses (Association of Portuguese Archaeologists). Roughly a year later (1864), MAC, the Museu Arqueológico do Carmo (Carmo Archaeological Museum) was installed here, designed to hold and exhibit important sculptural pieces from old ruined buildings (mainly the monastic houses abolished in 1834) and pieces from the church itself, discovered among the rubble.

Since the 19<sup>th</sup> century, a highly valuable collection of historical, archaeological and artistic pieces has been housed at MAC. These exhibits range from artefacts and pieces from Pre-History to contemporary times, allowing us to understand forms of thinking and feeling from very different periods and cultures.

## SUGGESTED ROUTE



**1**  
Gomes Martins  
Signature  
14<sup>th</sup> century, Lisbon

**2**  
The Knight's Tomb  
16<sup>th</sup> century, Santarém

**3**  
St John  
Nepomucene  
18<sup>th</sup> century, Lisbon

**4**  
Manueline Window  
16<sup>th</sup> century, Lisbon

**5**  
Vila Nova de São  
Pedro Castrum  
Maquette  
3200 BC to 1500 BC

**6**  
The Muse  
Sarcophagus  
4<sup>th</sup> century, Alfeizerão

**7**  
The Griffin Pillar  
9<sup>th</sup>-10<sup>th</sup> century, Lisbon

**8**  
Bust of a King  
[Afonso Henriques  
(?)] 13<sup>th</sup> century,  
Santarém

**9**  
Tomb of King  
Fernando I (detail)  
16<sup>th</sup> century, Santarém

**10**  
Papal Bull Seal  
granted to Nuno  
Álvares Pereira  
14<sup>th</sup> century, Lisbon

**11**  
Our Lady of Carmel  
16<sup>th</sup>-17<sup>th</sup> century,  
Lisbon

**12**  
Peruvian Mummy  
(boy)  
16<sup>th</sup> century, Peru

**13**  
Maquette of Carmo  
Church in the  
14<sup>th</sup> century  
2001, Lisbon

**14**  
The Laying of Christ  
in the Tomb. Scenes  
from Christ's Passion  
18<sup>th</sup> century, Lisbon

**15**  
Sacristy  
17<sup>th</sup> century, Lisbon